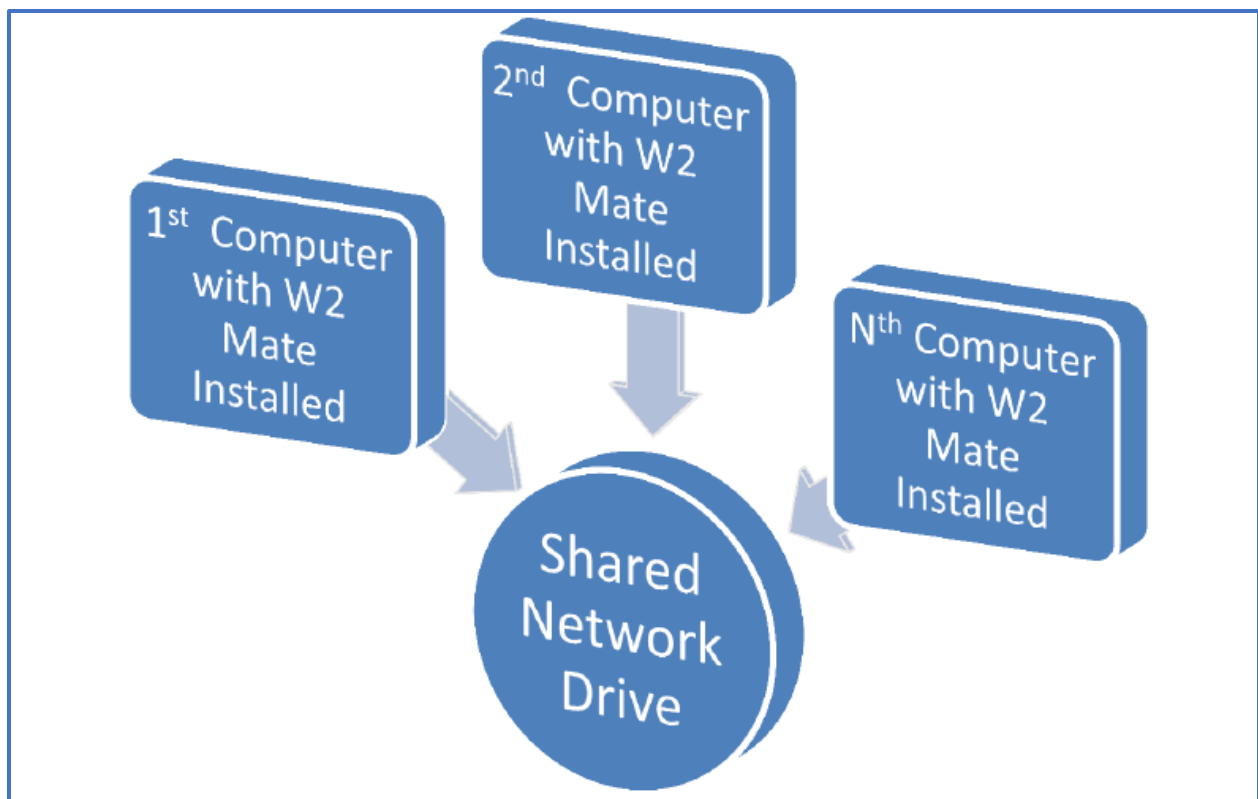


How to Run W2 Mate Over a Network

Note: In order to use this feature you must purchase and enable W2 Mate Option #2 to run the software over a network

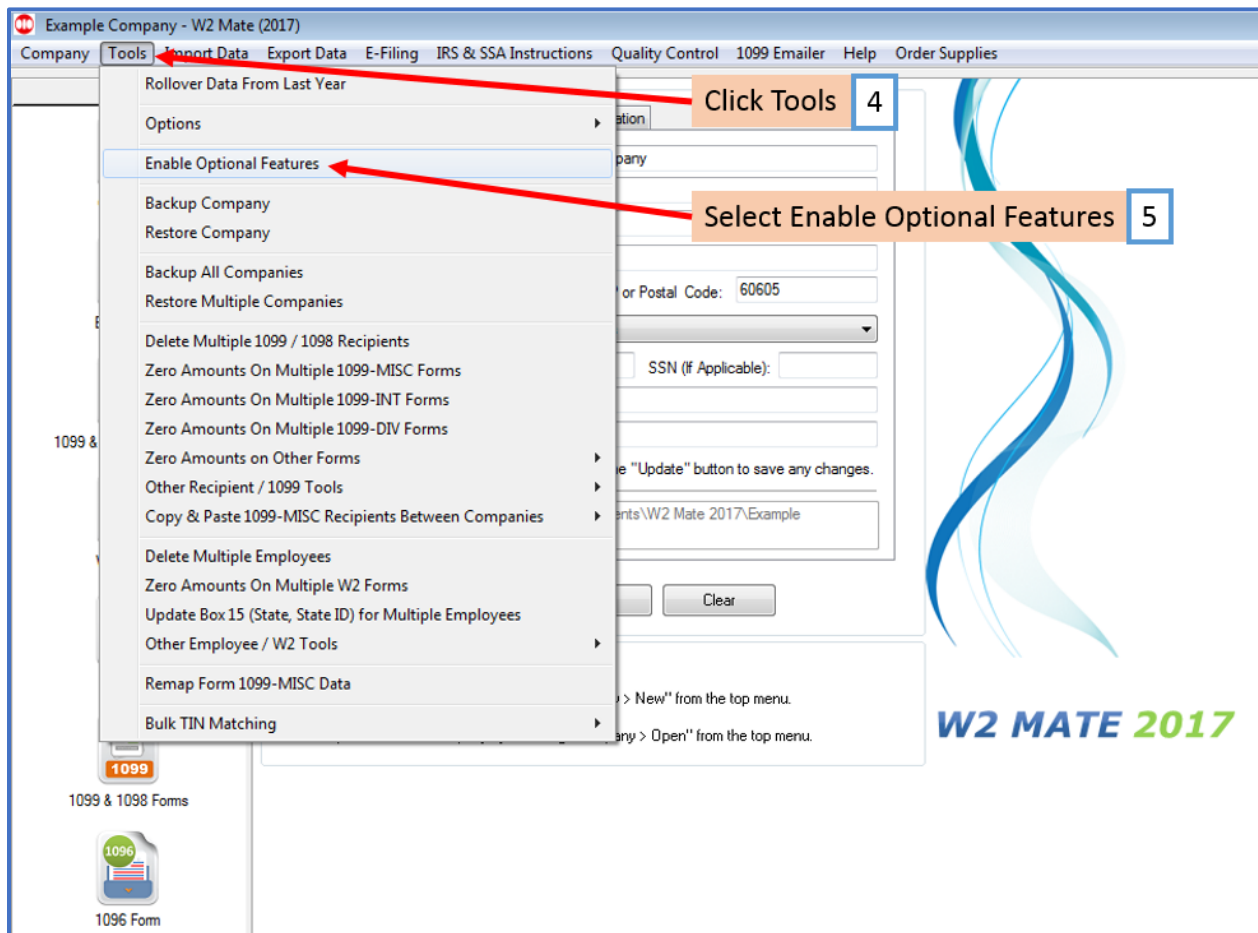
1. Create a folder on a shared network drive that can be accessed from all the network computers where W2 Mate software will be installed. This is the folder where the W2 Mate database (company) files will be stored. All licensed computers will need to use this folder to share the data.
2. Make sure that all the computers installing W2 Mate have FULL access rights to the new data folder (created in step 1) - We can't stress enough the importance of this point
3. Install W2 Mate software on each licensed computer



Note: Once you have W2 Mate installed on each computer, you will need to Enable Optional Features on each licensed computer

4. Click Tools

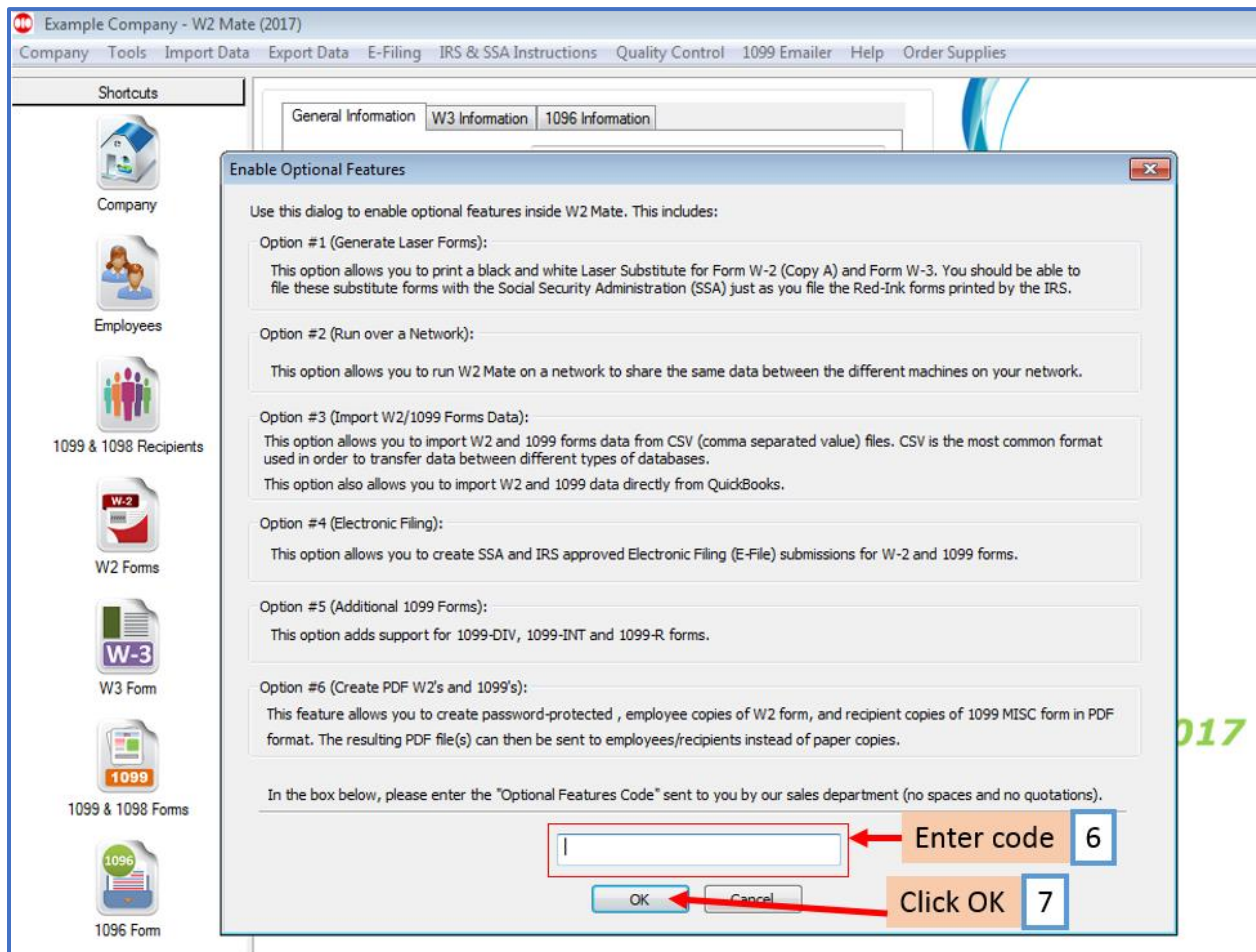
5. Select Enable Optional Features



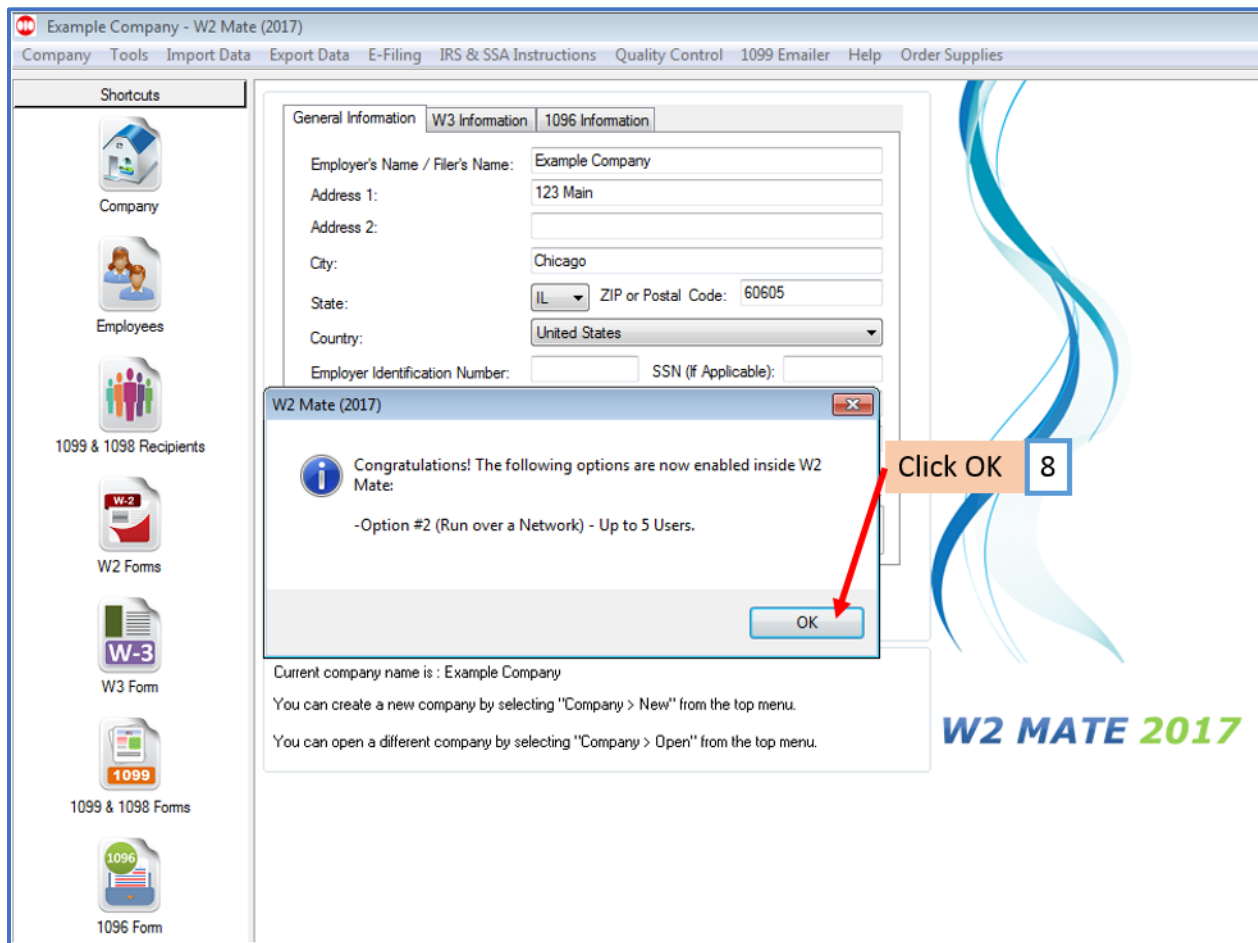
6. Enter the optional feature code

7. Click OK

Note: Enter each code one at a time, including the optional feature for running W2 Mate over a Network (W2 Mate Option #2)



8. Click OK

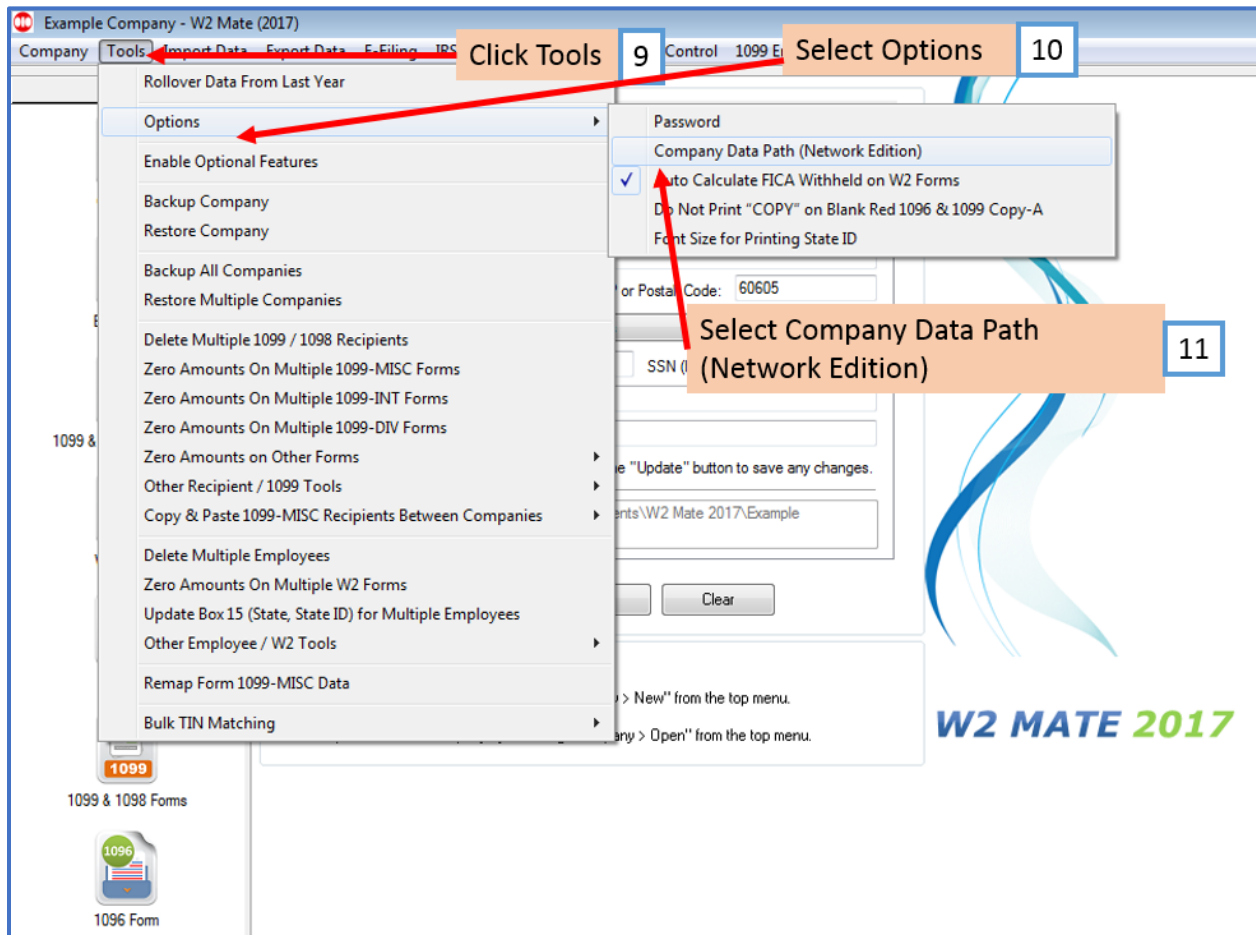


Once you have W2 Mate installed and the option enabled, you will need to update the Company Data Path to the folder you created in step 1 on each licensed computer

9. Click Tools

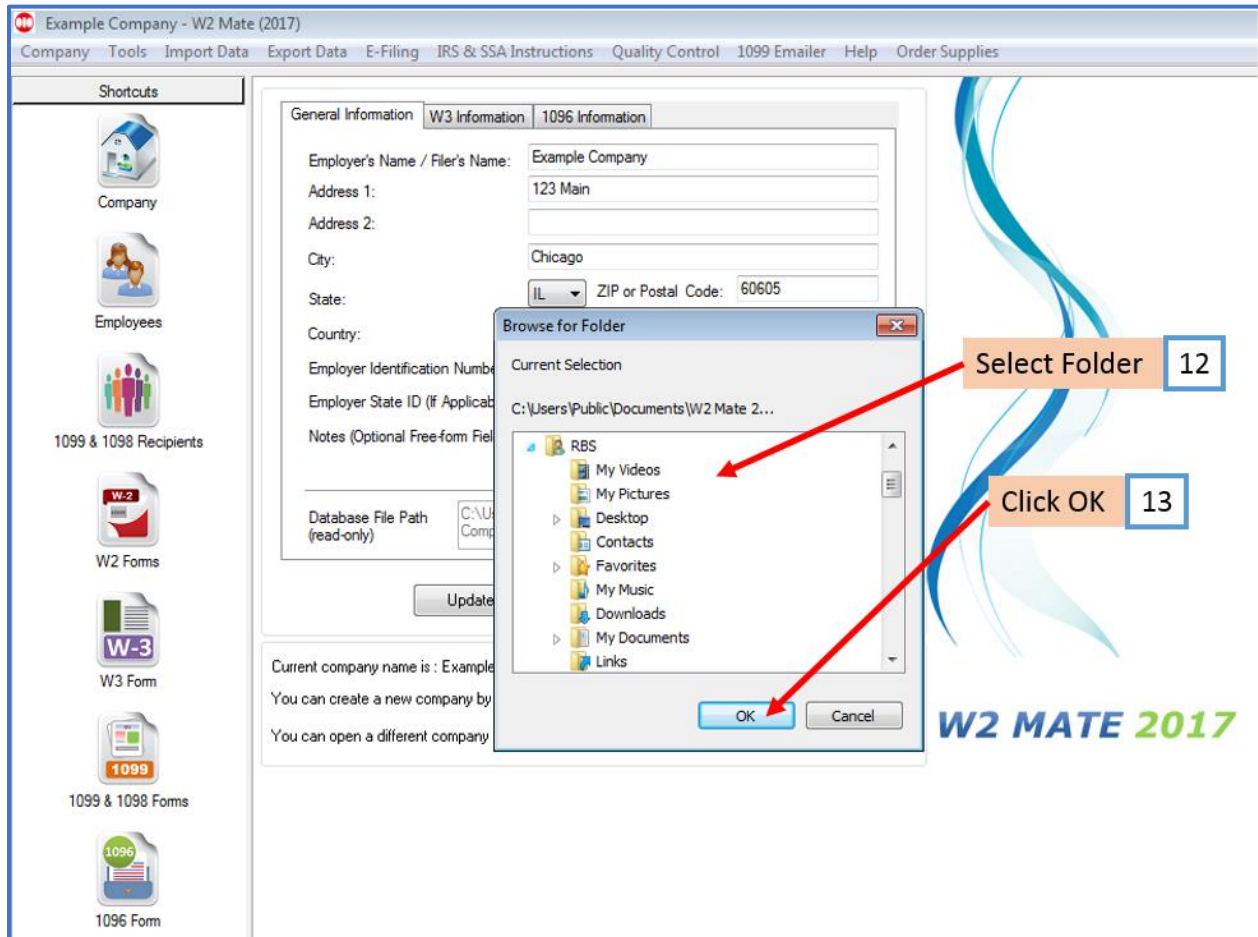
10. Select Options

11. Select Company Data Path (Network Edition)



12. Select the network folder created in step 1

13. Click OK



14. Copy current company database files to the new folder?

On the FIRST computer set up on the network click YES

Each additional computer set up on the network click NO

